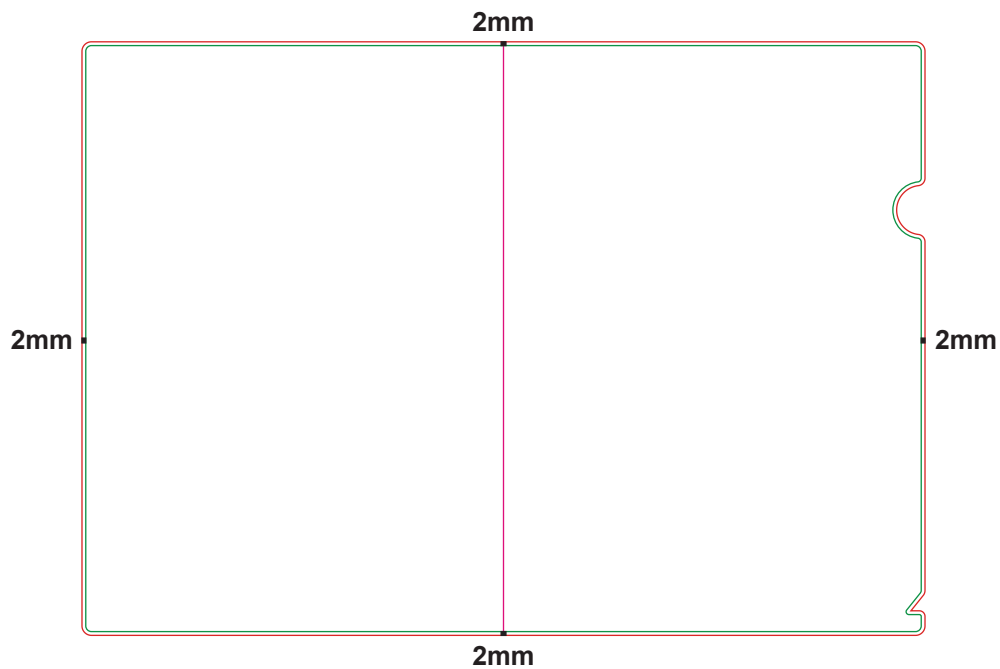
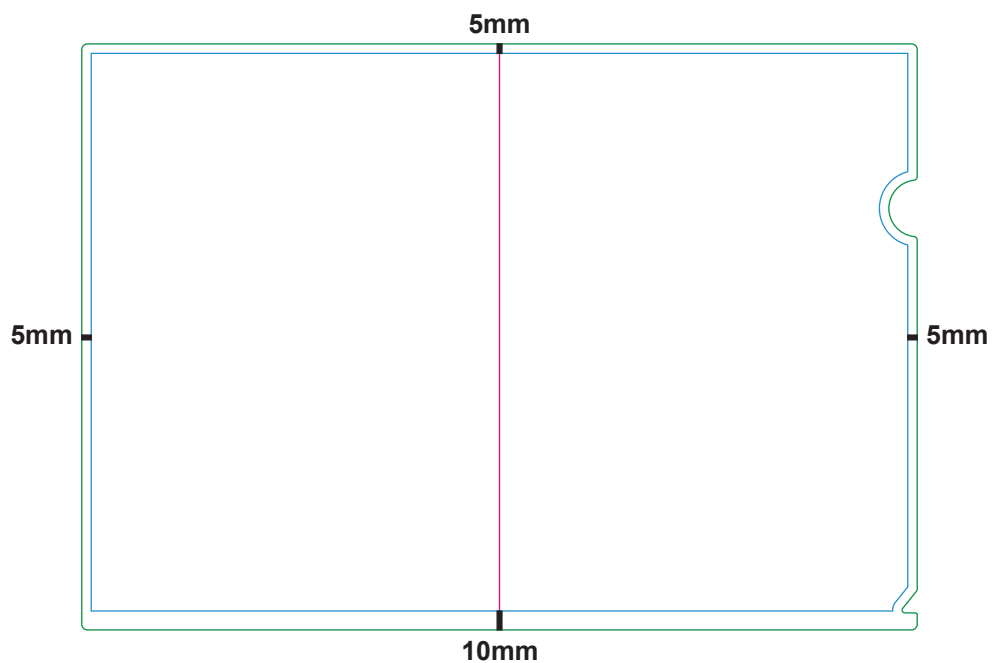


BLEEDING & SAFE ZONE

► Bleeding : **2mm** from all edge.



► Safe Zone : **5mm** for top, left & right edges. While **10mm** for bottom edge.



ARTWORK PRECAUTION

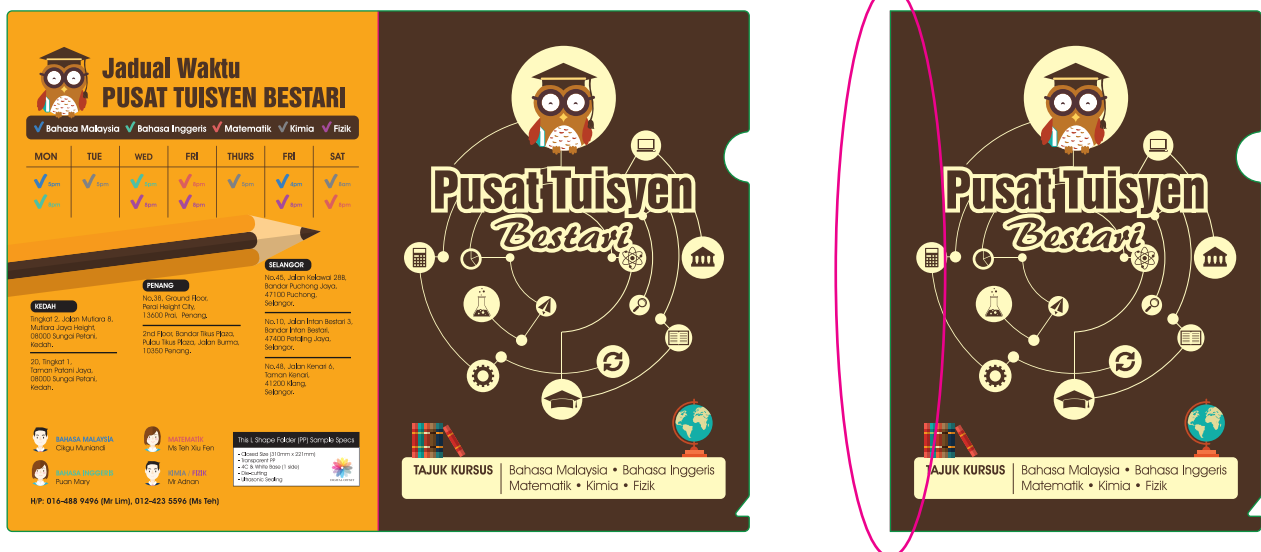
► Folding Tolerance : **+1mm**

Recommend to use same background colour while prepare artwork to avoid colour overlap onto other page after folding.



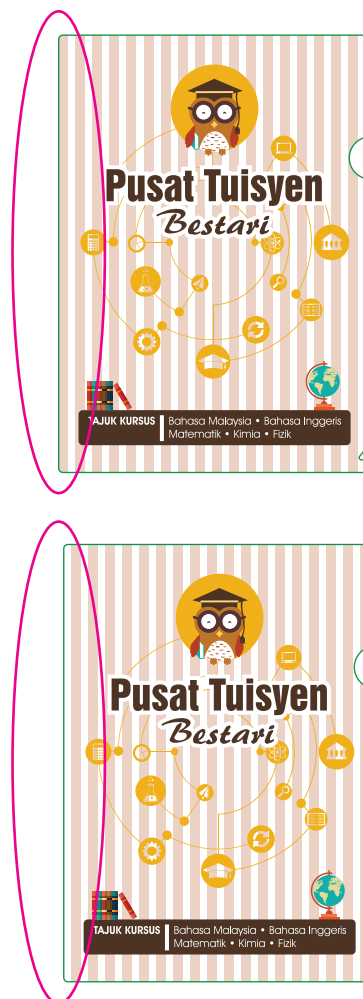
IMPORTANT: PLEASE AVOID YOUR ARTWORK CONTAIN DESIGN OR LAYOUT AS BELOW:

► 1. Different Colour Background



IMPORTANT: PLEASE AVOID YOUR ARTWORK CONTAIN DESIGN OR LAYOUT AS BELOW:

► 2. Background artwork with stripe design



► 3. Extended graphic on the folding line



REMARK: WE WILL NOT HELD ANY RESPONSIBILITY IN THE CIRCUMSTANCES SHOWN AS ABOVE.

STANDARD CHECKLIST :**COLOUR**

- ☐ Use ONLY CMYK colour mode in your artwork
- ☐ No colour tints (toning) lower than 10%
- ☐ Do not set black colour to (C=100 M= 100 Y= 100 K= 100)
- ☐ Make sure the value between colours are at least 10% of different. (Tint / toning effect more obvious)

LINE

- ☐ Line weight not less than 0.25points
(Not applicable for Pre-Inked stamp,spot UV,Hot Stamping)

IMAGES

- ☐ All images are in CMYK colour mode
- ☐ Resolution of all images are set to or above 300dpi.
- ☐ Scanned line Art/Black & White images resolution are set to or above 1200dpi.
- ☐ Do not manipulate images using a layout program

TEXT

- ☐ No font less than 4points
- ☐ Curve / Path / Create outline all fonts

ARTWORK

- ☐ Artwork is prepared in our Product Size Templates
- ☐ Background design expand to Full Bleed size
- ☐ No crop mark are applied
- ☐ Ensure artwork orientation

DESIGN

- ☐ All images have been exported / converted : Background, design effects, photos, images to TIFF files (not including text / vector images)
- ☐ Never manipulate images in layout program resolution: 300 dpi
- ☐ Color Mode: CMYK color mode

FILE FORMAT

- ☐ Artwork is saved in required file format : Adobe acrobat Document 4 – Ver 1.3 (*.pdf)
- ☐ Resolution: 300 dpi
- ☐ Color Mode: CMYK color mode